

Aurotek®

A Complete Solution from One Source

AUI SERIES

Fully-Automatic PCB Separator



→ Inheriting the excellent design of AUI series, the high-efficiency dual working table with automatic loading/unloading system, the fully-automatic PCB Separator AUI series is born.

In addition to the features of clean working, effective PCB separating and easy to operate, the AUI series is applicable to assorted sizes of PCB.

We provide flexible and customer-configurable options for different production need such as spindle and dust collecting system, and other specific functions requested by customers.

The AUI series is the closest to your production management requirement, the user-friendly operation interface, the cutting path simulation & optimization, and POKA YOKE processing control provides the customer a time cost-saving and production/material traceable solution.

Efficient
Accurate
Speedy
Yield Increasing

AUI 3000 / 4000 / 5000 SERIES

www.aurotek.com.tw

SPECIFICATION

MODEL NO.	AUI 3000 / 3000C	AUI 4000 / 4000C	AUI 5000 / 5000C
WORKING AREA	X:330 mm Y:350 mm	X:430mm Y:450mm	X:630 mm Y:550 mm
Working Table	2	2	1
PCB Thickness	0.8 ~ 3.0 mm		
PCB Component Height (Max.)	Upward: 15 mm / Downward: 35 mm		
Motion Control	7 Axes AC Servo Motors	7 Axes AC Servo Motors	6 Axes AC Servo Motors
Moving Speed	Standard: X, Y=1,000 mm/s; Z=750 mm/s; Carrier X=700 mm/s; Carrier Z=750 mm/s Maximum: X, Y=1,200 mm/s; Z=750 mm/s; Carrier X=700 mm/s; Carrier Z=750 mm/s		
Cutting Speed	0~100 mm/s		
Cutting Accuracy	±80 μm	±80 μm	±100 μm
Positioning Repeatability	±10 μm		
Cutting Modes	Linear, Circular, U-Curve, Arc, L-Curve		
Standard Bits	Ø 1.0 mm, Ø 1.2 mm, Ø 1.6 mm, Ø 2.0 mm		
Operating System	Windows 7		
Pneumatic Pressure	0.5/0.6 Mpa (5/6 Bar)		
Working Height	890 ~ 940 mm		
Dimensions (W*D*H)	1974*1120*1720 mm + Signal Light 561 mm	2374*1334*1720 mm + Signal Light 561 mm	2572*1583*1720 mm + Signal Light 561 mm
Net Weight (Approx.)	680 KGS	840 KGS	860 KGS
Vacuum Cleaner	5HP		
Standard Spindle	Standard: 4026, 265W, (Max.) 58,000 rpm, Torque: 4.5 Ncm Option 1: 4025DC-T, 470W, (Max.) 30,000 rpm, Torque: 15 Ncm Option 2: AP 008-ESD, 500W, (Max.) 80,000 rpm, Torque: 8.4 Ncm		
Standard Monitor	15" Touch Panel		
Power Supply	3 Phase AC220 V±5% 50 Hz/60 Hz, 4.0 kw		

Efficient

- A. High horsepower industrial dust-collectors
- B. Small dust-collecting duct designed for upward or downward dust extraction systems
- C. Duct is close to the milling area, removing dust at once while depaneling

Accurate

- A. KURODA high precision ball screw
- B. Panasonic servo motor
- C. Sycotec spindle
- D. Advantech industrial computer

- E. Aurotek motion control card
- F. Aurotek Vision System
- We guarantee: Cpk>=1.33
- Positioning Repeatability ±10 μm
- Cutting Accuracy ±80 μm

Speedy

- A. High-speed axis modules reaches up to (max.) 1200 mm/s
- B. Maximum cutting speed 100mm/s
- C. 2 parallel processing tables. Maximize production throughput while minimizes idle time
- D. Customized fixture and tools. Production changeover can be done in just a few seconds

Yield Increasing

Easy to use is a MUST.
We design machines for:

- A. Manageability
- B. Usability
- C. Safety
- D. Traceability

AUI SERIES

Fully-Automatic PCB Separator

AUI 3000 / 4000 / 5000

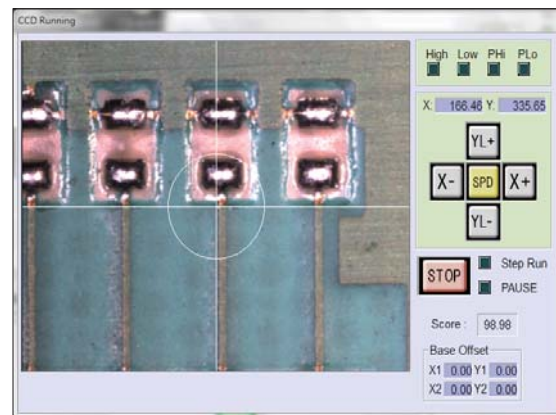
FEATURES

Useability	CCD Camera System	Manageability	Real-Time Production Info
	Cutting Route Simulation		Spindle & Bit Lifespan Management
	Cutting Route Optimization		User Account Management
	Bit-sectioning for Multiple Usage (0~9 Times)		System Backup Software
	Offline Programming Software *		Bit Diameter Detection *
	Spindle Rpm Digital Adjustment *		Specific Fixture Identification*
	Inlet Conveyor Width Auto-Adjustment *		Specific Nozzle Pad Identification *
	Output Flat Belt Conveyor *	Safety	Bit Sliding & Breaking Detection
	Rotatable Carrier *		Fiducial Mark Alignment
	Specific Fixture *		Air Ionizer System
Universal Loading/unloading system with Nozzle Module	Traceability	PCB Bow & Twist Checking	
Nozzle Pad *		CE Approval*	
		Production Traceability	
		Automatic Barcode(DMX) Reader *	
			MES Integration (by TCP/IP Socket) *
			UPS system for IPC*

* SOME OPTIONS CAN'T BE APPLIED TO SOME MODELS TOGETHER, PLEASE CONTACT US FOR FURTHER CONFIRMATION

Date	Time	L Product Name	R Product Name	Total Qty	Cycle Time(sec)
2018/9/7	09:22:51	Test-L	Test-R	251	6.14
2018/9/7	09:23:56	Test-L	Test-R	251	6.14
2018/9/7	09:25:38	Test-L	Test-R	251	6.14
2018/9/7	09:55:41	Test-L	Test-R	251	6.14
2018/9/7	09:56:08	Test-L	Test-R	251	6.14
2018/9/7	10:41:28	Test-L	Test-R	251	6.14
2018/9/7	10:56:48	Test-L	Test-R	251	6.14
2018/9/7	13:22:58	Test-L	Test-R	251	6.14
2018/9/7	13:23:00	Test-L	Test-R	251	6.14
2018/9/7	13:23:01	Test-L	Test-R	251	6.14
2018/9/7	13:23:03	Test-L	Test-R	251	6.14
2018/9/7	13:23:04	Test-L	Test-R	251	6.14
2018/9/7	13:23:05	Test-L	Test-R	251	6.14
2018/9/7	13:23:06	Test-L	Test-R	251	6.14
2018/9/7	13:23:19	Test-L	Test-R	251	6.14

Production Traceability



CCD Camera System



Bit Sliding & Breaking Detection



PCB Bow & Twist Checking

VACUUM CLEANER

YSF vacuum cleaner is designed for PCB Separator Series to collect the dust & scrap generated by router. High horse power motor & high efficiency fan to ensure the suction with excellent efficiency.

MODEL NO.	YSF-V553	YSF-V553 ZETA	YSF-V605
Dimensions(L*W*H)	665x635x1610 mm	780x780x1000 mm	780x665x1900 mm
Weight	195 KGS	170 KGS	230 KGS
Power supply	3 phase 50 Hz / 60 Hz 220 V		
	2.2 kw		3.7 kw
Motor power	3 HP		5 HP
Inlet wind speed	26 m/sec	27 m/sec	28 m/sec
Inlet wind capacity	28 m ³ /min	26 m ³ /min	40 m ³ /min
Inlet wind pressure	300 mm -Ag	180 mm -Ag	300 mm -Ag
Inlet Diameter	150 mm	125 mm	150 mm
Outlet Diameter	203 mm	150 mm	203 mm



Aurotek
A Complete Solution from One Source

Aurotek Corporation Headquarter

Address : 1F, No. 60, Jhouzih St. ,Neihu District, Taipei 114, Taiwan.
TEL : +886-2-8752-3311
FAX : +886-2-8752-3347
E-mail : info@aurotek.com
Website : <https://www.aurotek.com.tw/en>

Taoyuan Plant

Address : 1F, No.61, Lioufu Rd., Lujhu District, Taoyuan 338, Taiwan.
TEL : +886-3-322-3788, +886-3-212-1775
FAX : +886-3-322-0866, +886-3-322-0869
E-mail : info@aurotek.com

Taichung Office

Address :7F-8, No. 262, Sec. 2, He-Nan Rd., Si-Tun District, TaichungCity 407, Taiwan.
TEL : +886-4-2452-2822
FAX : +886-4-2451-0073
E-mail : info@aurotek.com

Tainan Office

Address : 7F, No. 573, Cing-Ping Rd., An-Ping District, TainanCity 708, Taiwan.
TEL : +886-6-293-4853
FAX : +886-6-293-4973
E-mail : info@aurotek.com

Aurotek (Shanghai) Inc.

Address : No. 936, Ji Min Tang Nan Rd., Huaqiao Economic Development Zone Kunshan, Jiangsu, 215332 China.
TEL : +86-512-5013-9099, +86-512-5013-9091 ~ 7
FAX : +86-512-5013-9098, +86-512-5013-9089
E-mail : sales@aurotek.com.cn
Website : <https://www.aurotek.com.cn>

Aurotek (Shanghai) Inc, Huanan Office.

Address :Shenzhen District Longhua new district east peace zhenhua 21 times plaza, room 706
TEL : +86-755-2919-5676
FAX : +86-755-2377-7037
E-mail : sales@aurotek.com.cn

Aurotek (Kunshan) Inc.

Address : No. 936, Ji Min Tang Nan Rd., Huaqiao Economic Development Zone Kunshan, Jiangsu, 215332 China.
TEL : +86-512-5797-1581
FAX : +86-512-5797-1583

Aurotek (Japan) Inc.

Address :2nd Fl., Akihabara-Seishin Bidg., 11-7-8 Kanda Suda-cho, Chiyoda-ku Tokyo 101-0041, Japan.
TEL : +81-3-5297-7028
FAX : +81-3-5297-7029
E-mail : info@aurotek.co.jp
Website : <https://www.aurotek.com.tw/jp>

Plenty Island (Thai) Co., Ltd.

Address : 3 Soi Charoenrat 10, Charoenrat Rd., Bangkok, Bangkhoraem, Bangkok 10120 Thailand.
TEL : +66-2-291-9933 (Automatic 8 Lines)
FAX : +66-2-291-2065
E-mail : jackson@plenty.co.th



AUROTEK CORPORATION

Copyright © 2019 Aurotek Corporation. All rights reserved.

CAT.2019/02/25

Aurotek®

A Complete Solution from One Source

AUO SERIES

Semi-Automatic PCB Separator

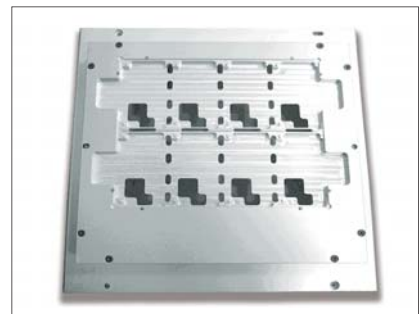
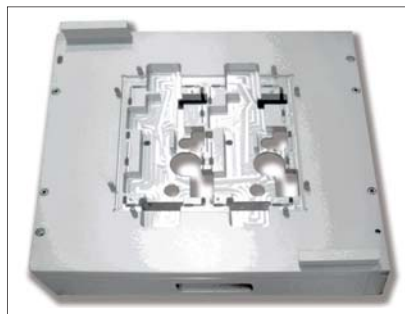


- ➔ The semi-automatic (offline) PCB Separator is the best solutions to fit the mass production in SMT line.

Dual working table enhances the production efficiency. Standard 2 machine models are applicable for different PCB sizes (330*350mm, 450*520mm).

At same time Aurotek provides customize options to meet the specific demand of PCB production.

Friendly interface, accurate PCB depaneling along with dual working table brings you more productive production experience.



Efficient
Accurate
Speedy
Yield Increasing

AUO 3000 / 4000 SERIES

SPECIFICATION

MODEL NO	AUO 3000 / 3000C	AUO 4000 / 4000C
WORKING AREA	X:330mm Y:350mm	X:450mm Y:520mm
Working Table	2	
PCB Thickness	0.8 ~ 3.0 mm	
PCB Component Height (Max.)	Upward: 15 mm / Downward: 45 mm	
Motion Control	4 Axes with Panasonic AC Servo Motors	
Moving Speed	Standard: X, Y=1,000 mm/s; Z=750 mm/s Maximum: X, Y=1, 200 mm/s; Z=750 mm/s	
Cutting Speed	0~100 mm/s	
Cutting Accuracy	±80 µm	
Positioning Repeatability	±10 µm	
Cutting Modes	Linear, Circular, U-Curve, Arc, L-Curve	
Standard Bits	Ø 1.0 mm, Ø 1.2 mm, Ø 1.6 mm, Ø 2.0 mm	
Operating System	Windows 7	
Pneumatic Pressure	0.5/0.6 Mpa (5/6 Bar)	
Working Height	890 ~ 940 mm	
Dimensions (W*D*H)	1565*1110*1462 mm + Signal Light 561 mm	1789*1400*1435 mm + Signal Light 561 mm
Net Weight (Approx.)	460 KGS	620 KGS
Vacuum Cleaner	3HP or 5HP	
Standard Spindle	Standard: 4026, 265W, (Max.) 58,000 rpm, Torque: 4.5 Ncm Option 1: 4025DC-T, 470W, (Max.) 30,000 rpm, Torque: 15 Ncm Option 2: AP 008-ESD, 500W, (Max.) 80,000 rpm, Torque: 8.4 Ncm	
Standard Monitor	19" LCD Monitor	
Power Supply	3 Phase AC220 V±5% 50 Hz/60 Hz, 4.0 kw	

Efficient

- A. High horsepower industrial dust-collectors
- B. Small dust-collecting duct designed for upward or downward dust extraction systems
- C. Duct is close to the milling area, removing dust at once while depaneling

Accurate

- A. KURODA high precision ball screw
 - B. Panasonic servo motor
 - C. Sycotec spindle
 - D. Advantech industrial computer
 - E. Aurotek motion control card
 - F. Aurotek Vision System
- We guarantee: Cpk>=1.33
Positioning Repeatability ±10 µm
Cutting Accuracy ±80 µm

Speedy

- A. High-speed axis modules reaches up to (max.) 1200 mm/s
- B. Maximum cutting speed 100mm/s
- C. 2 parallel processing tables. Maximize production throughput while minimizes idle time
- D. Customized fixture and tools. Production changeover can be done in just a few seconds

Yield Increasing

Easy to use is a MUST.
We design machines for:

- A. Manageability
- B. Usability
- C. Safety
- D. Traceability

FEATURES

Useability	CCD Camera System	Manageability	Real-Time Production Info	
	Cutting Route Simulation		Spindle & Bit Lifespan Management	
	Cutting Route Optimization		User Account Management	
	Bit-sectioning for Multiple Usage (0~9 Times)		System Backup Software	
	Offline Programming Software *		Bit Diameter Detection *	
	Spindle Rpm Digital Adjustment*		Specific Fixture Identification*	
	Inlet Conveyor Width Auto-Adjustment *		Safety	Bit Sliding & Breaking Detection
	Output Flat Belt Conveyor *			Fiducial Mark Alignment
	Rotatable Carrier *			Air Ionizer System
	Specific Fixture *			PCB Bow & Twist Checking*
Universal Loading/unloading system with Nozzle Module	CE Approval*			
Specific Nozzle Pad *	Traceability	Sliding Doors*		
		Production Traceability		
		Automatic Barcode(DMX) Reader*		
		MES Integration (by TCP/IP Socket) *		
		UPS system for IPC*		

* SOME OPTIONS CAN'T BE APPLIED TO SOME MODELS TOGETHER, PLEASE CONTACT US FOR FURTHER CONFIRMATION.

Date	Time	L Product Name	R Product Name	Total Qty	Cycle Time(sec)
2018/9/7	09:22:51	Test-L	Test-R	251	6.14
2018/9/7	09:23:56	Test-L	Test-R	251	6.14
2018/9/7	09:25:38	Test-L	Test-R	251	6.14
2018/9/7	09:55:41	Test-L	Test-R	251	6.14
2018/9/7	09:56:08	Test-L	Test-R	251	6.14
2018/9/7	10:41:28	Test-L	Test-R	251	6.14
2018/9/7	10:56:48	Test-L	Test-R	251	6.14
2018/9/7	13:22:58	Test-L	Test-R	251	6.14
2018/9/7	13:23:00	Test-L	Test-R	251	6.14
2018/9/7	13:23:03	Test-L	Test-R	251	6.14
2018/9/7	13:23:04	Test-L	Test-R	251	6.14
2018/9/7	13:23:05	Test-L	Test-R	251	6.14
2018/9/7	13:23:06	Test-L	Test-R	251	6.14
2018/9/7	13:23:19	Test-L	Test-R	251	6.14

Production Traceability

No.	Ord	Start Point X	Start Point Y	Pass1 Point X	Pass1 Point Y	Pass2 Point X	Pass2 Point Y	End Point X	End Point Y
1	L:LINE	817.73	323.55					755.63	285.16
2	L:LINE	305.51	197.75					363.25	320.90
3	L:LINE	889.01	109.06					879.44	243.58
4									
5									

Cutting Route Optimization



Bit Sliding & Breaking Detection

BIT Functions

Auto Bit Change Options: Left Auto Bitchange, Right Auto Bitchange, Left Auto Search, Right Auto Search

Measuring Bit Diameter Options: Check Bit Diameter With Proj [Auto]

inspection tolerances: Upper 0.05 Lower -0.09

Spindle speed: Speed 1 (2.01 <= Bit Dia) 39000 rev, Speed 2 (1.00 <= Bit Dia < 2.01) 40000 rev, Speed 3 (0.01 <= Bit Dia < 1.00) 50000 rev, Current Speed 40000 rev, Voltage 0.00 v

Spindle & Bit Lifespan Management

VACUUM CLEANER

YSF vacuum cleaner is designed for PCB Separator Series to collect the dust & scrap generated by router. High horse power motor & high efficiency fan to ensure the suction with excellent efficiency.

MODEL NO.	YSF-V553	YSF-V553 ZETA	YSF-V605
Dimensions (WxDxH)	665x635x1610 mm	780x780x1000 mm	780x665x1900 mm
Weight	195 KGS	170 KGS	230 KGS
Power supply	3 phase 50 Hz / 60 Hz 220 V		
	2.2 kw		3.7 kw
Motor power	3 HP		5HP
Inlet wind speed	26 m/sec	27 m/sec	28 m/sec
Inlet wind capacity	28 m ³ /min	26m ³ /min	40 m ³ /min
Inlet wind pressure	300 mm -Ag	180 mm-Ag	300 mm -Ag
Inlet Diameter	150 mm	125 mm	150 mm
Outlet Diameter	203 mm	150 mm	203 mm



Aurotek
A Complete Solution from One Source

Aurotek Corporation Headquarter

Address : 1F, No. 60, Jhouzih St. ,Neihu District, Taipei 114, Taiwan.
TEL : +886-2-8752-3311
FAX : +886-2-8752-3347
E-mail : info@aurotek.com
Website : <https://www.aurotek.com.tw/en>

Taoyuan Plant

Address : 1F, No.61, Lioufu Rd., Lujhu District, Taoyuan 338, Taiwan.
TEL : +886-3-322-3788, +886-3-212-1775
FAX : +886-3-322-0866, +886-3-322-0869
E-mail : info@aurotek.com

Taichung Office

Address : 7F-8, No. 262, Sec. 2, He-Nan Rd., Si-Tun District, TaichungCity 407, Taiwan.
TEL : +886-4-2452-2822
FAX : +886-4-2451-0073
E-mail : info@aurotek.com

Tainan Office

Address : 7F, No. 573, Cing-Ping Rd., An-Ping District, TainanCity 708, Taiwan.
TEL : +886-6-293-4853
FAX : +886-6-293-4973
E-mail : info@aurotek.com

Aurotek (Shanghai) Inc.

Address : No. 936, Ji Min Tang Nan Rd., Huaqiao Economic Development Zone Kunshan, Jiangsu, 215332 China.
TEL : +86-512-5013-9099, +86-512-5013-9091 ~ 7
FAX : +86-512-5013-9098, +86-512-5013-9089
E-mail : sales@aurotek.com.cn
Website : <https://www.aurotek.com.cn>

Aurotek (Shanghai) Inc, Huanan Office.

Address :Shenzhen District Longhua new district east peace zhenhua 21 times plaza, room 706
TEL : +86-755-2919-5676
FAX : +86-755-2377-7037
E-mail : sales@aurotek.com.cn

Aurotek (Kunshan) Inc.

Address : No. 936, Ji Min Tang Nan Rd., Huaqiao Economic Development Zone Kunshan, Jiangsu, 215332 China.
TEL : +86-512-5797-1581
FAX : +86-512-5797-1583

Aurotek (Japan) Inc.

Address :2nd Fl., Akihabara-Seishin Bidg., 11-7-8 Kanda Suda-cho, Chiyoda-ku Tokyo 101-0041, Japan.
TEL : +81-3-5297-7028
FAX : +81-3-5297-7029
E-mail : info@aurotek.co.jp
Website : <https://www.aurotek.com.tw/jp>

Plenty Island (Thai) Co., Ltd.

Address : 3 Soi Charoenrat 10, Charoenrat Rd., Bangkok, Bangkhoraem, Bangkok 10120 Thailand.
TEL : +66-2-291-9933 (Automatic 8 Lines)
FAX : +66-2-291-2065
E-mail : jackson@plenty.co.th



AUROTEK CORPORATION

Copyright © 2019 Aurotek Corporation. All rights reserved.

CAT.2019/02/25

Aurotek®

A Complete Solution from One Source

AUO 3000DT / 3000DTC

Desktop Semi-Automatic PCB Separator



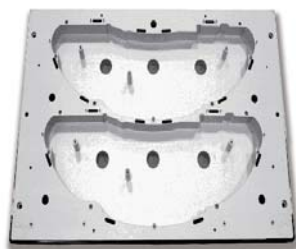
IT'S VERY WELL
MADE IN TAIWAN
2019

➔ AUO 3000DT desktop type PCB separator is the most ideal solution for SMT line with space limitation, the PC-based controller system provides more friendly user interface.

The AUO 3000DT is equipped with its optimal dust collection system, and its lightweight design provides customers a space-saving solution.

The single working table is suitable for small-volume large-variety production, it is a most cost-efficient PCB separator!

AUO3000DT brings usability, safety and portability to user.



Efficient
Accurate
Speedy
Yield Increasing

AUO 3000DT / 3000DTC SERIES

www.aurotek.com.tw

SPECIFICATION

MODEL NO	AUO 3000DT / 3000DTC
WORKING AREA	X:330mm Y:250mm
Working Table	1
PCB Thickness	0.8 ~ 3.0 mm
PCB Component Height (Max.)	Upward: 15 mm / Downward: 45 mm
Motion Control	3 Axes with Panasonic AC Servo Motors
Moving Speed	Maximum : X, Y, Z=500 mm/s
Cutting Speed	0~100 mm/s
Cutting Accuracy	±80 μm
Positioning Repeatability	±10 μm
Cutting Modes	Linear, Circular, U-Curve, Arc, L-Curve
Standard Bits	Ø 1.0 mm, Ø 1.2 mm, Ø 1.6 mm, Ø 2.0 mm
Operating System	Windows 7
Pneumatic Pressure	0.5/0.6 Mpa (5/6 Bar)
Working Height	It'll be decided by customers.
Dimensions (W*D*H)	680*815*845 mm + Signal Light 280 mm
Net Weight (Approx.)	140 KGS
Vacuum Cleaner	3HP
Standard Spindle	Standard: 4026, 265W, (Max.) 58,000 rpm, Torque: 4.5 Ncm Option: AP 008-ESD, 500W, (Max.) 80,000 rpm, Torque: 8.4 Ncm
Standard Monitor	19" LCD Monitor
Power Supply	1 Phase AC220 V±5% 50 Hz/60 Hz, 1.1 kw



Bit Sliding & Breaking Detection



CCD Camera System



Fiducial Mark Alignment

FEATURES

Manageability	Real-Time Production Info
	Spindle & Bit Lifespan Management
	User Account Management
	System Backup Software
	Bit Diameter Detection *
	Specific Fixture Identification *
	Specific Nozzle Pad Identification *
Useability	CCD Camera System
	Cutting Route Simulation
	Cutting Route Optimization
	Bit-sectioning for Multiple Usage (0~9 Times)
	Offline Programming Software *
	Spindle Rpm Digital Adjustment*
	Inlet Conveyor Width Auto-Adjustment *
	Output Flat Belt Conveyor *
	Specific Fixture *
	Universal Loading/unloading system with Nozzle Module
Nozzle Pad *	
Safety	Bit Sliding & Breaking Detection
	Fiducial Mark Alignment
	Air Ionizer System
	CE Approval *
Traceability	Production Traceability
	Automatic Barcode(DMX) Reader*
	MES Integration (by TCP/IP Socket) *
* SOME OPTIONS CAN'T BE APPLIED TO SOME MODELS TOGETHER, PLEASE CONTACT US FOR FURTHER CONFIRMATION.	



Specific Fixture Identification



Universal Fixture / Specific Fixture

Efficient

- A. Mini size high horsepower industrial dust-collector
- B. Small dust-collecting duct is close to the milling area, removing dust at once while depaneling

Accurate

- A. KURODA high precision ball screw
- B. Panasonic servo motor
- C. Sycotec spindle
- D. Advantech industrial computer
- E. Aurotek motion control card
- F. Aurotek Vision System
- We gurantee: Cpk>=1.33
- Positioning Repeatability ±10 μm
- Cutting Accuracy ±80 μm

Speedy

- A. High-speed axis modules reach up to (max.)500 mm/s
- B. Maximum cutting speed 100mm/s
- C. Customized fixture and tools. Production changeover can be done in just a few seconds

Yield Increasing

Easy to use is a MUST.
We design machines for:

- A. Manageability
- B. Usability
- C. Safety
- D. Traceability

VACUUM CLEANER



Model No.	YSF-V553 ZETA
Power Supply	3 Phase, 220 V, 50 Hz / 60 Hz
Air Volume	263 / min
Static Pressure	2.9K pa
Noise Rating	75 dB ~ 80 dB
Dimension L*W*H	780*780*1000 mm
N.W. (Approx.)	170 KGS

Aurotek[®]
A Complete Solution from One Source

Aurotek Corporation Headquarter

Address : 1F, No. 60, Jhouzih St. ,Neihu District, Taipei 114, Taiwan.
TEL : +886-2-8752-3311
FAX : +886-2-8752-3347
E-mail : info@aurotek.com
Website : <https://www.aurotek.com.tw/en>

Taoyuan Plant

Address : 1F, No.61, Lioufu Rd., Lujhu District, Taoyuan 338, Taiwan.
TEL : +886-3-322-3788, +886-3-212-1775
FAX : +886-3-322-0866, +886-3-322-0869
E-mail : info@aurotek.com

Taichung Office

Address : 7F-8, No. 262, Sec. 2, He-Nan Rd., Si-Tun District, TaichungCity 407, Taiwan.
TEL : +886-4-2452-2822
FAX : +886-4-2451-0073
E-mail : info@aurotek.com

Tainan Office

Address : 7F, No. 573, Cing-Ping Rd., An-Ping District, TainanCity 708, Taiwan.
TEL : +886-6-293-4853
FAX : +886-6-293-4973
E-mail : info@aurotek.com

Aurotek (Shanghai) Inc.

Address : No. 936, Ji Min Tang Nan Rd., Huaqiao Economic Development Zone Kunshan, Jiangsu, 215332 China.
TEL : +86-512-5013-9099, +86-512-5013-9091 ~ 7
FAX : +86-512-5013-9098, +86-512-5013-9089
E-mail : sales@aurotek.com.cn
Website : <https://www.aurotek.com.cn>

Aurotek (Shanghai) Inc, Huanan Office.

Address :Shenzhen District Longhua new district east peace zhenhua 21 times plaza, room 706
TEL : +86-755-2919-5676
FAX : +86-755-2377-7037
E-mail : sales@aurotek.com.cn

Aurotek (Kunshan) Inc.

Address : No. 936, Ji Min Tang Nan Rd., Huaqiao Economic Development Zone Kunshan, Jiangsu, 215332 China.
TEL : +86-512-5797-1581
FAX : +86-512-5797-1583

Aurotek (Japan) Inc.

Address :2nd Fl., Akihabara-Seishin Bldg., 11-7-8 Kanda Suda-cho, Chiyoda-ku Tokyo 101-0041, Japan.
TEL : +81-3-5297-7028
FAX : +81-3-5297-7029
E-mail : info@aurotek.co.jp
Website : <https://www.aurotek.com.tw/jp>

Plenty Island (Thai) Co., Ltd.

Address : 3 Soi Charoenrat 10, Charoenrat Rd., Bangkok, Bangkhoraem, Bangkok 10120 Thailand.
TEL : +66-2-291-9933 (Automatic 8 Lines)
FAX : +66-2-291-2065
E-mail : jackson@plenty.co.th



AUROTEK CORPORATION

Copyright © 2019 Aurotek Corporation. All rights reserved.

CAT.2019/02/25